



# QUINCY VALLEY MEDICAL CENTER

# 2024-2027 COMMUNITY HEALTH NEEDS ASSESSMENT

This report is intended for public knowledge to communicate the general health status of Grant County Public Hospital District #2.



# **Grant County Public Hospital District #2 dba Quincy Valley Medical Center**

## **Community Health Needs Assessment**

Introduction	Page 2
Demographics of Hospital District #2	Page 3
Socioeconomic Factors	Page 4
Community Engagement	Page 5
District's Strategic Priorities	Page 6
Implementation Strategy	Page 6
Resources	Page 7
Board Approval	Page 8

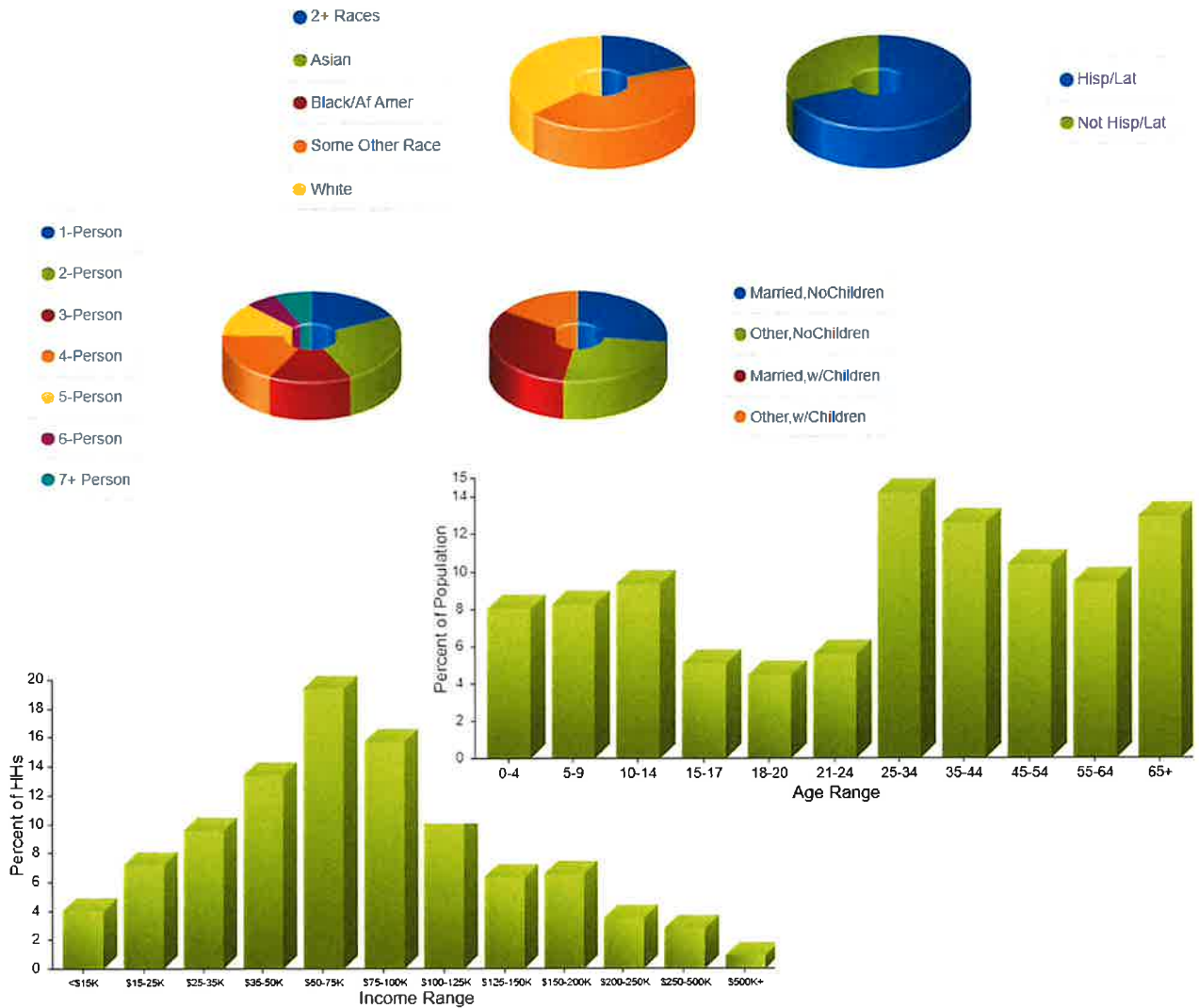






## DEMOGRAPHICS OF HOSPITAL DISTRICT #2

The population of the hospital district is reflected in data according to the zip codes of 98848 and 98824 to being approx. 13,552 in 2020. This is an increase of approx. 15% from 2010 of 11,657. Also see the below tables as data regarding age, income, and race of the public hospital district.



Source: Claritas Pop-Facts® Demographics 2023

There are approximately 3,557 house holds in the district. Additionally, the median household income is \$68,090 and the employment rate is 60.7%. In 2021, data indicates that there are 14.8% citizens without health care coverage in the hospital district.

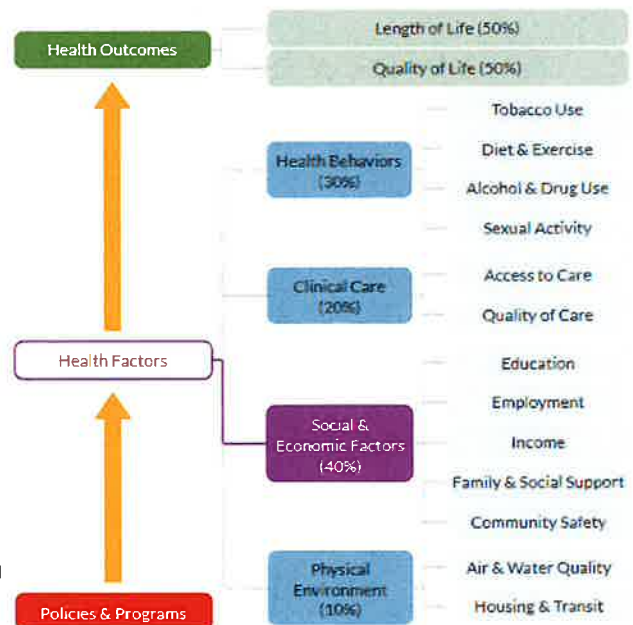




## SOCIOECONOMIC FACTORS OF HEALTH

In Grant county, access to primary care is determined mostly by income and employment status in the community. The impact of income levels and employment statuses on access to primary care is significant and multifaceted. The Robert Wood Johnson Foundation and the University of Wisconsin Population Health Institute jointly publish an annual report of health data for every County in the United States, called County Health Rankings. The Robert Wood Johnson Foundation releases county health rankings every year for every county in the nation. Per their data research, in Grant County, Social and Economic Factors account for 40% of the health factors attributing to a person's involvement in health care.<sup>2</sup> The cost of healthcare, including co-payments, deductible, and out-of-pocket expenses, can be prohibitive for those limited financial resources. Low-income individuals are more likely to be uninsured or underinsured. There is also an impact on individuals to postpone or forego necessary primary care visits, resulting in delayed diagnosis and treatment of health conditions. Income levels can contribute to geographic disparities in healthcare access. Individuals in rural or economically disadvantaged areas may have to travel long distances to reach primary care providers. Individuals with lower incomes may be less likely to engage in preventive care measures, such as screenings and vaccinations, due to cost concerns. This can lead to a higher prevalence of preventable diseases within this demographic. There may be a perception or reality of lower quality of care in facilities that serve predominantly low-income populations. This can result in individuals avoiding seeking care until conditions become more severe.

Health behaviors encompass a wide range of actions and choices that individuals make, directly influencing their health. In Grant County, where health behaviors account for 30% of health factors, several key health behaviors are likely to play a significant role in shaping the overall health of the community. Not mentioned in the adjacent graphic worthy of also being noted as it is an impact in our community is health literacy. Understanding health information and access to health education within our community is limited. Preventative health, stress management, and safety practices should also be considered. Understanding and addressing these health behaviors can contribute to the development of targeted interventions and health promotion strategies in Grant County. Community-based programs, educational initiatives, and policy changes may be implemented to encourage healthier behaviors and improve overall health outcomes.





## COMMUNITY ENGAGEMENT

Over the past year, QVMC's commitment to understanding and addressing the unique health needs of our community has been exemplified through active engagement in various community events. Recognizing the invaluable input of residents, we have organized and participated in a series of forums aimed at soliciting feedback on community health needs. From participating at town hall meetings and health fairs to in-person luncheons on our campus, our team has fostered an open and inclusive dialogue with community members. These events have provided a platform for residents to share their perspectives, concerns, and priorities regarding health and wellness. By actively seeking input, we aim to ensure that our initiatives are reflective of the diverse needs of our community, fostering a collaborative approach to promoting health and well-being.

During our community engagement events, key points emerged from discussions that underscore the importance of tailoring healthcare services to meet the specific needs of our residents. One prevalent concern was the ease of access to the health care portal, reflecting a growing reliance on digital platforms for health-related information and services. Bilingual providers were identified as a critical need to enhance effective communication, ensuring that language barriers do not hinder quality care. Community members consistently emphasized the necessity to increase the number of primary providers to address the growing demand for accessible healthcare services. Another notable suggestion was the introduction of a family liaison role to provide intentional care for loved ones of patients, recognizing the interconnected nature of familial well-being. Recognizing the importance of a holistic approach, educational resources for loved ones and preventative care resources were also highlighted as essential components of community health initiatives. Furthermore, the community expressed interest in the incorporation of telehealth options, recognizing the potential for technology to expand healthcare accessibility, particularly for those facing transportation or mobility challenges. These insights gleaned from community engagement events are invaluable in shaping our healthcare strategies, ensuring they align closely with the expressed needs and preferences of our diverse and dynamic community.

This ongoing engagement underscores our commitment to community-driven healthcare solutions and informs our strategies for addressing the specific health challenges faced by our residents.



## **DISTRICT'S STRATEGIC PRIORITIES**

The identified socioeconomic factors and community engagement points will significantly influence the district's strategic priorities moving forward. In summary, the socioeconomic factors and community engagement points highlight the interconnectedness of healthcare needs and community preferences. The district's strategic priorities should reflect a comprehensive and community-centered approach, addressing workforce challenges, enhancing diagnostic services, expanding therapy options, leveraging telehealth solutions, and incorporating holistic care options to meet the diverse healthcare needs of the community. Continuous engagement with the community is vital to ensuring that strategic priorities remain responsive to evolving needs and preferences.

## **IMPLEMENTATION TO SUPPORT PRIORITIES**

The District Will:

- seek to attract providers for primary care services to support the growth of our community
- actively look for ways to support the local workforce
- continue to integrate technology-based options (tele-health) as deemed meaningful and sustainable for our patients
- participate with community healthcare providers to support palliative care measures, hospice/respite care and other needs not formally being addressed locally





## REFERENCES

1. [https://data.census.gov/profile/ZCTA5\\_98848?g=860XX00US98848](https://data.census.gov/profile/ZCTA5_98848?g=860XX00US98848)
2. <https://www.countyhealthrankings.org/explore-health-rankings/county-health-rankings-model/health-factors/social-economic-factors/employment/unemployment?keywords=Grant%2C+Washington&f%5B0%5D=type%3Astates&f%5B1%5D=type%3Acounties&year=2023&county=53025>







**BOARD APPROVAL**

In accordance with requirements in the Affordable Care Act, this Community Health Needs Assessment was approved by the Grant County Public Hospital District Board of Commissioners at their Regular monthly meeting held on November 25, 2024, the following Commissioners being present and so voting for approval.

  
\_\_\_\_\_  
Commissioner, Chair

  
\_\_\_\_\_  
Commissioner

  
\_\_\_\_\_  
Commissioner

  
\_\_\_\_\_  
Commissioner

  
\_\_\_\_\_  
Commissioner

